



CENTRO STUDI LUCA D'AGLIANO

Collegio Carlo Alberto

UNIVERSITÀ DEGLI STUDI DI TORINO

3rd Migration Observatory Report: Immigrant integration in Europe

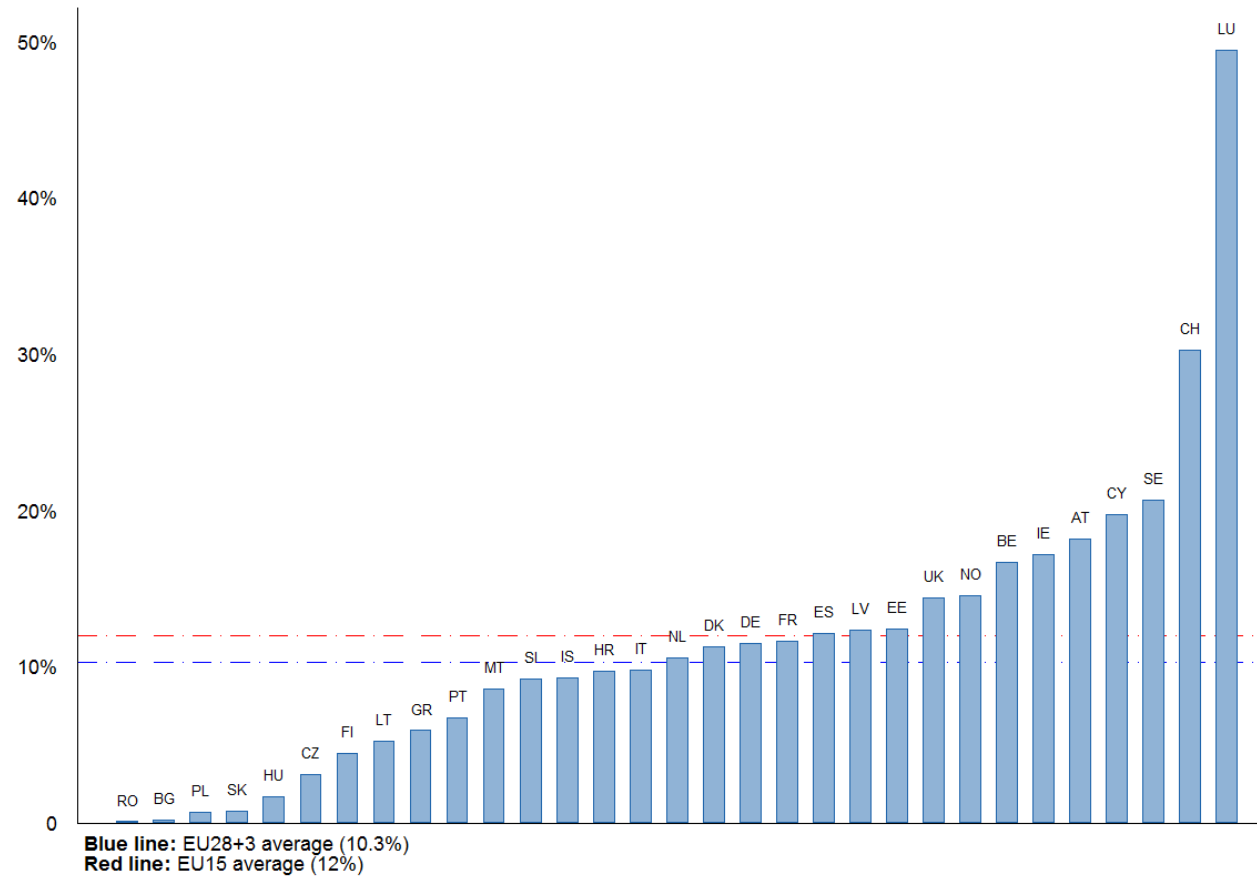
Tommaso Frattini (*University of Milan and LdA*)

with

Natalia Vigezzi (*LdA*)

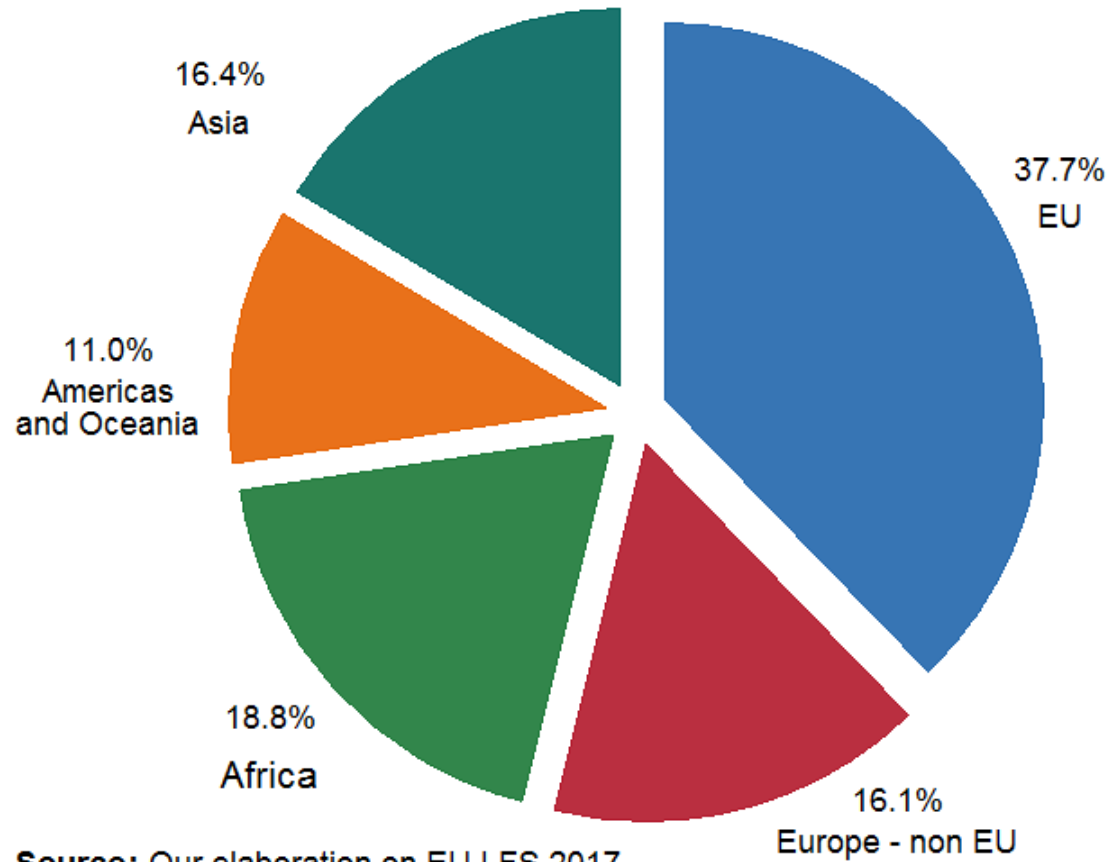
February 1st 2019, Collegio Carlo Alberto

Immigrants in the European Union



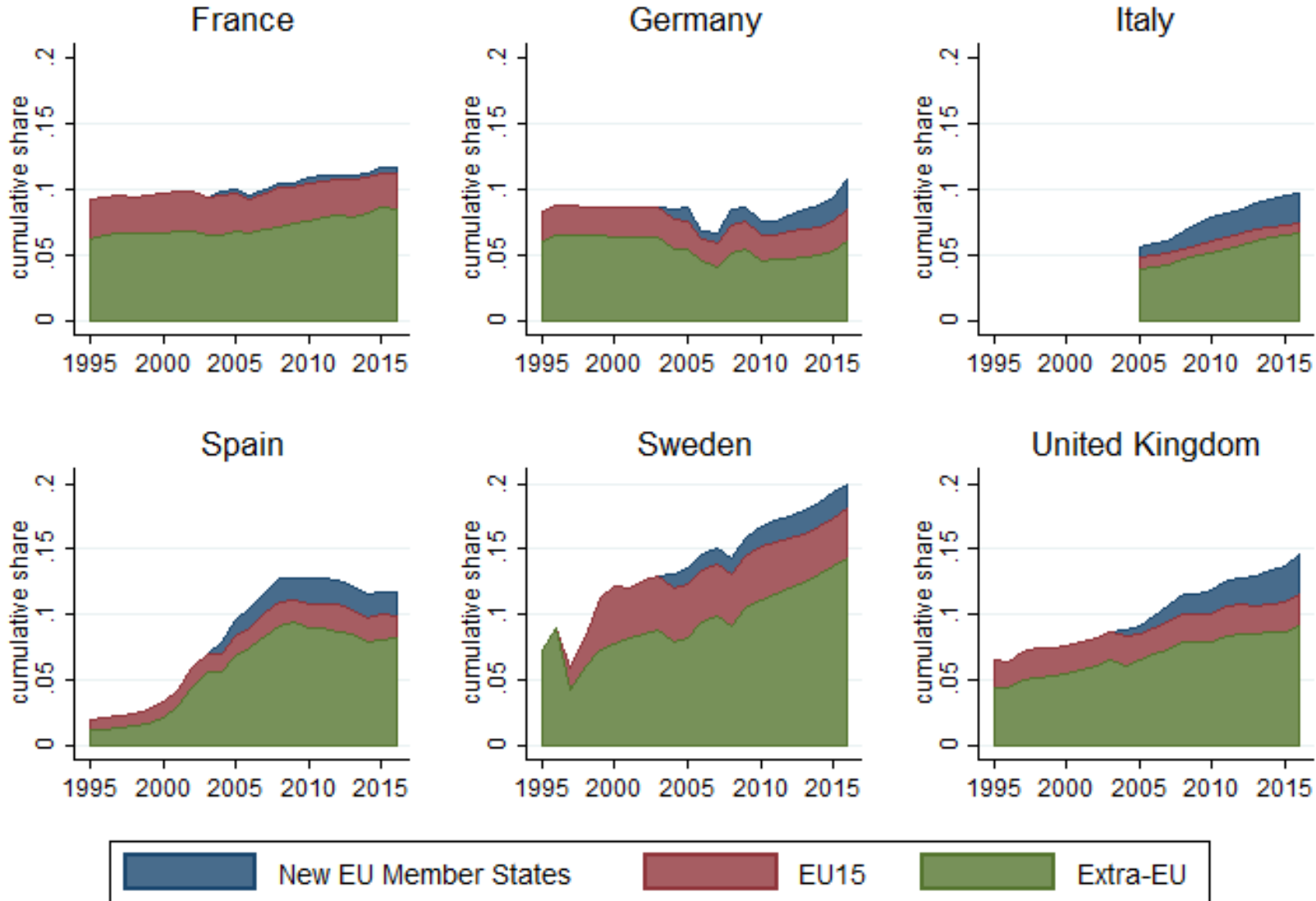
Source: Our elaboration on EU LFS 2017

More than half of the immigrants in the EU are from a European country



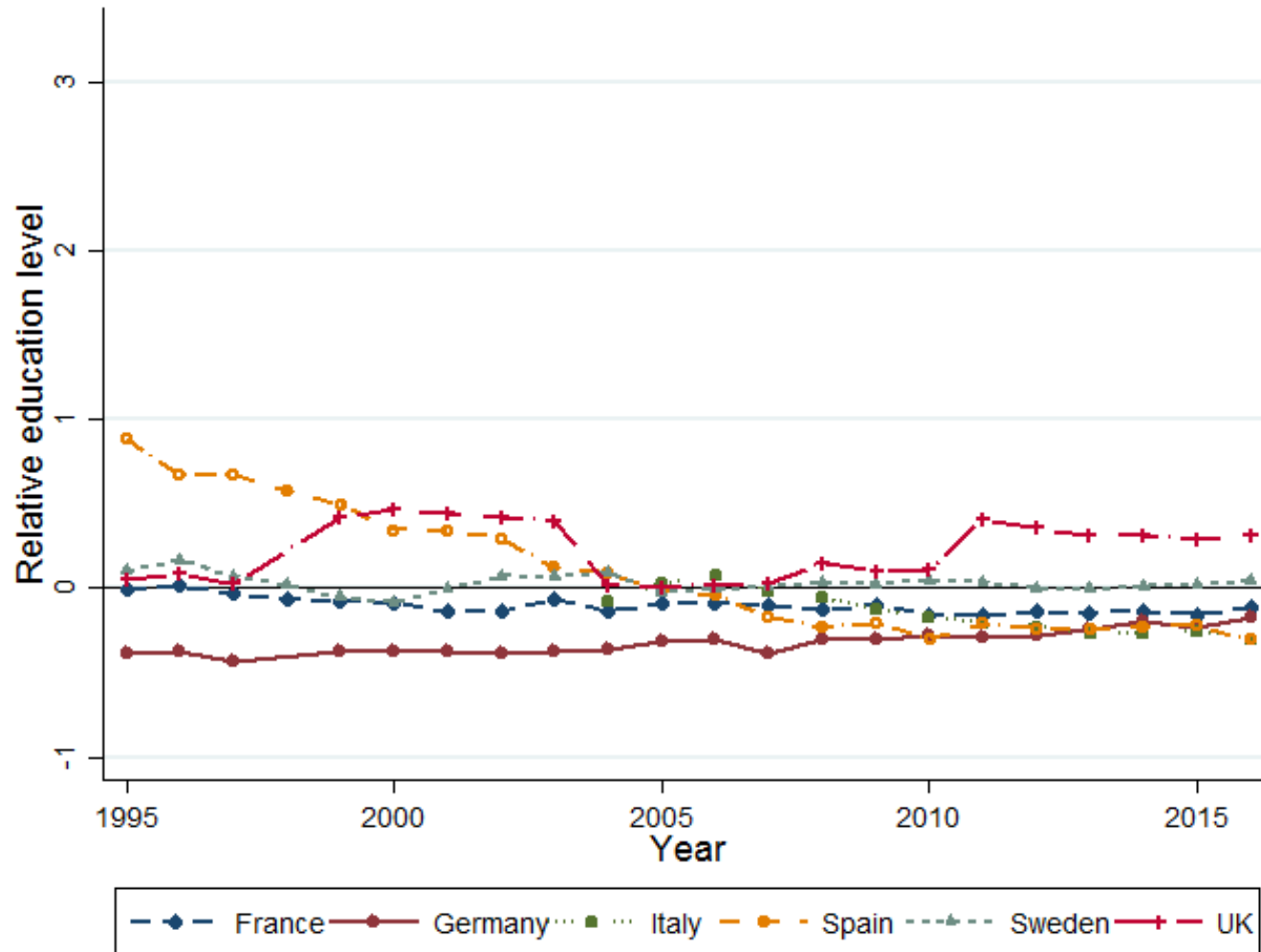
Source: Our elaboration on EU LFS 2017

Immigrants as a share of total population

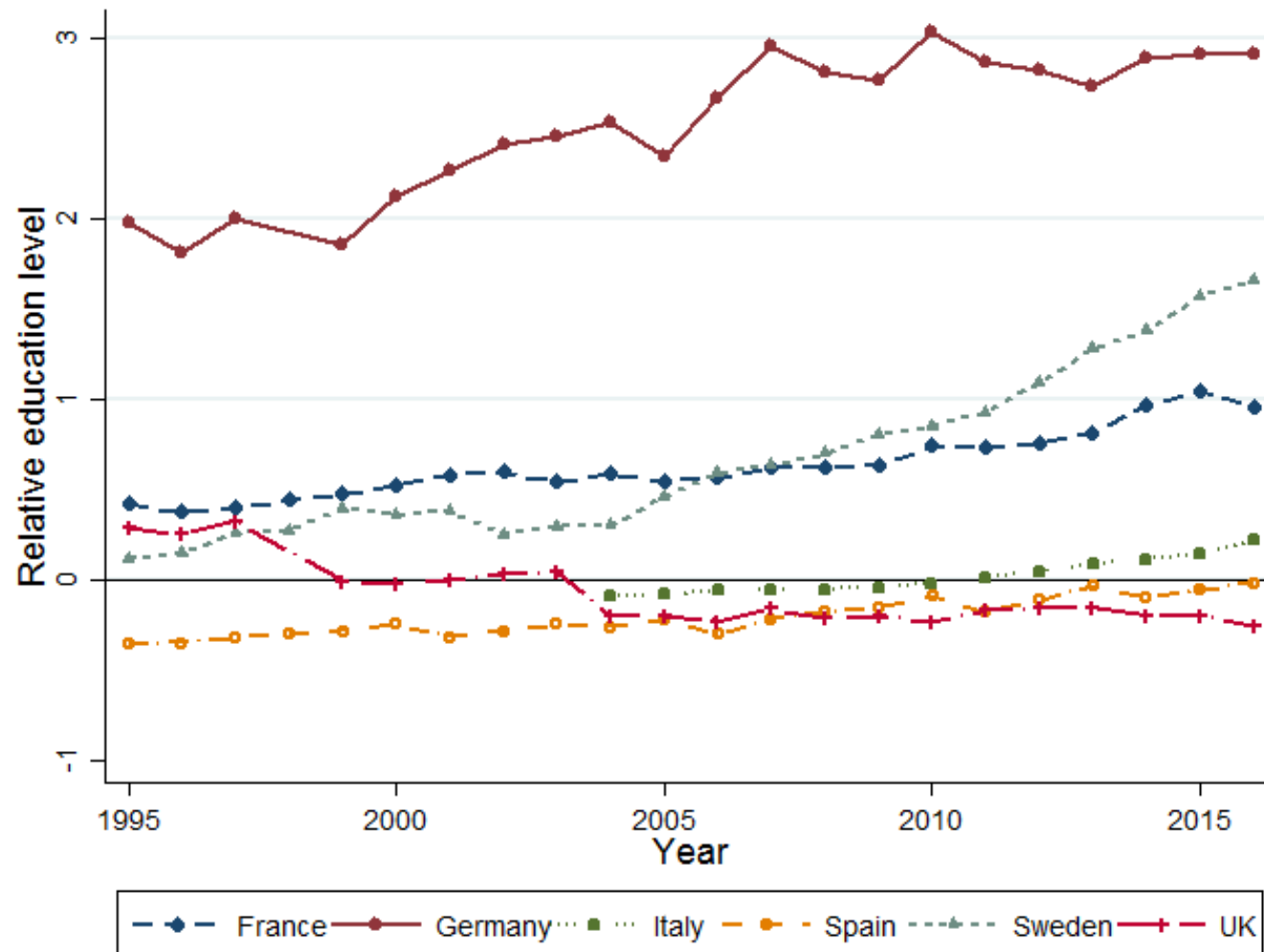


Source: Our elaboration on EU LFS

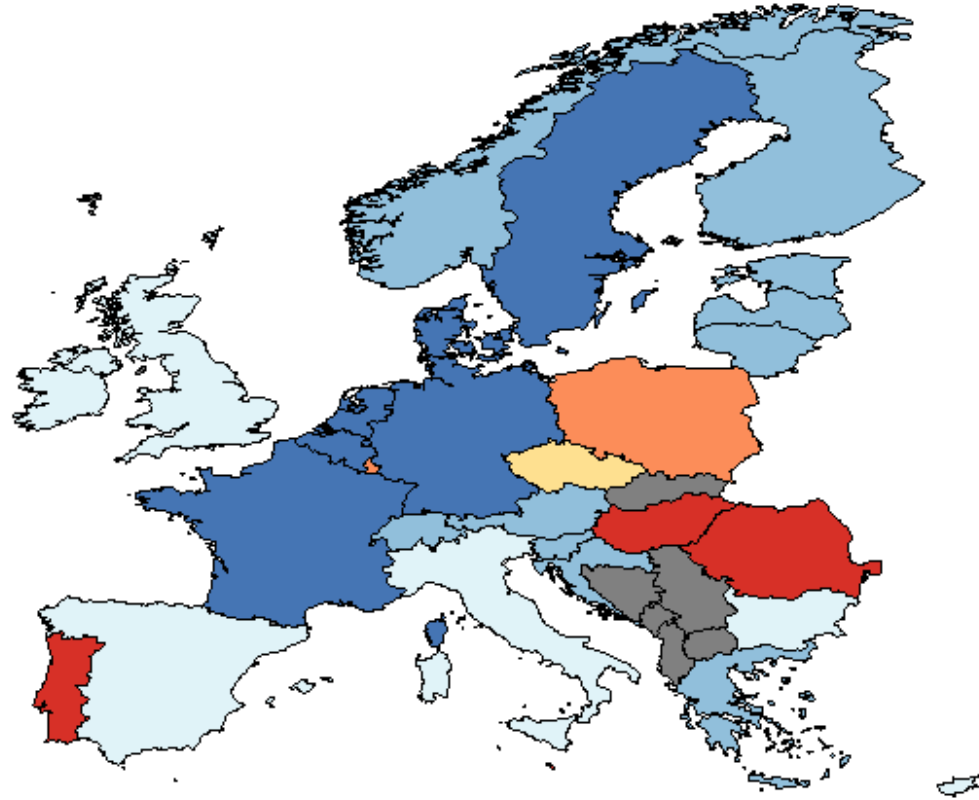
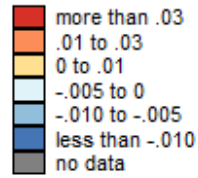
The share of tertiary educated immigrants and natives is similar within country...



...but relative share of low educated immigrants is higher and increasing

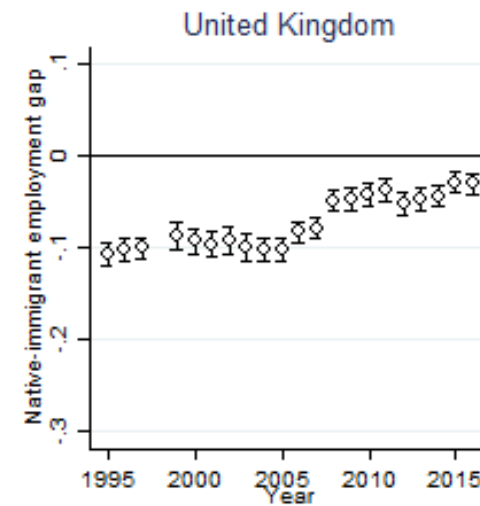
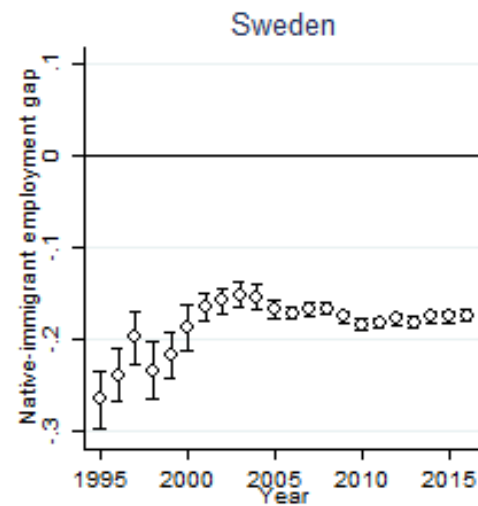
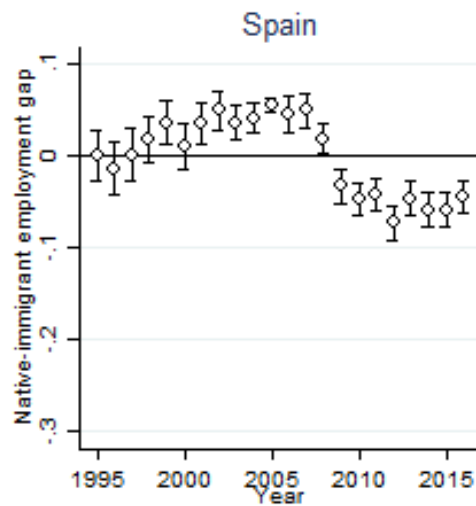
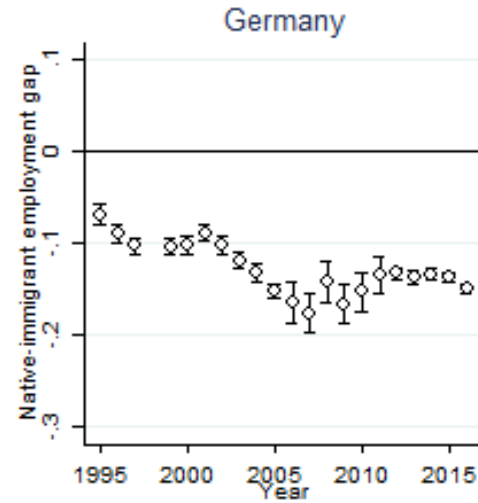
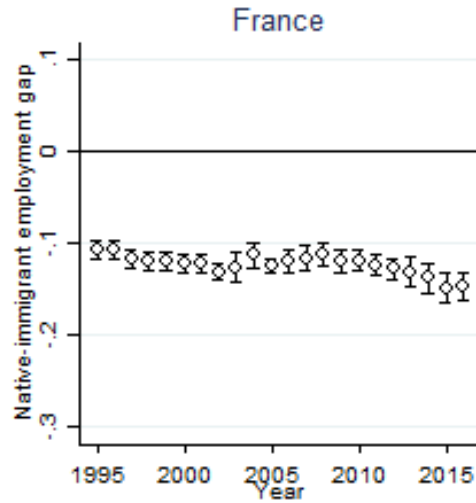


Immigrant-native gaps in employment probability

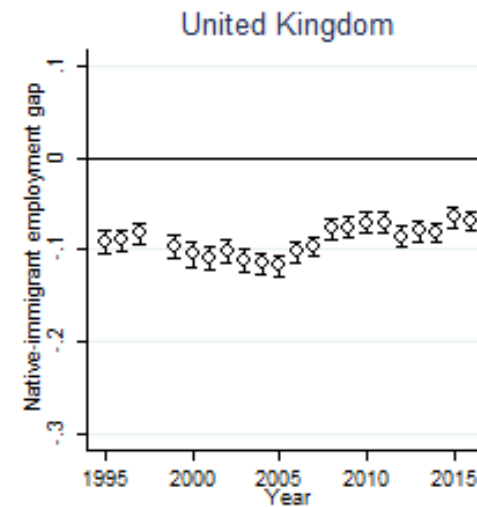
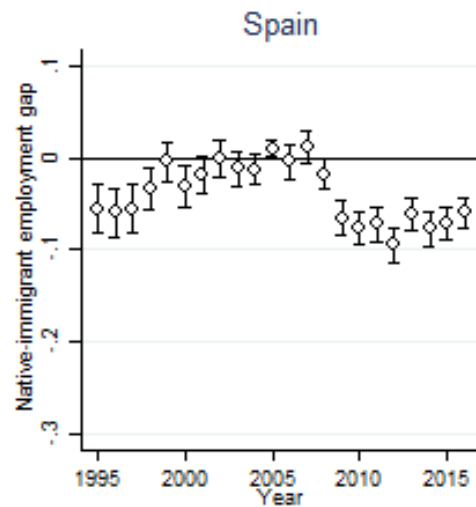
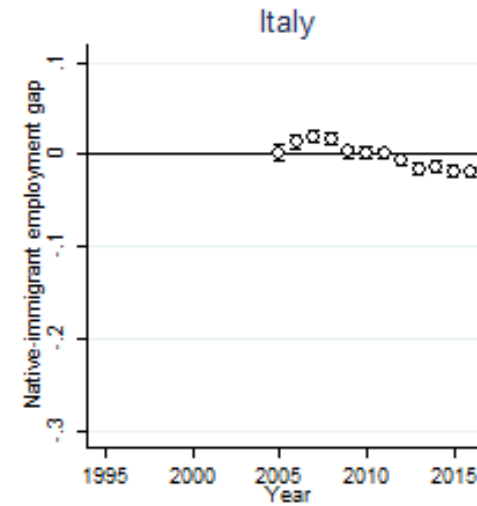
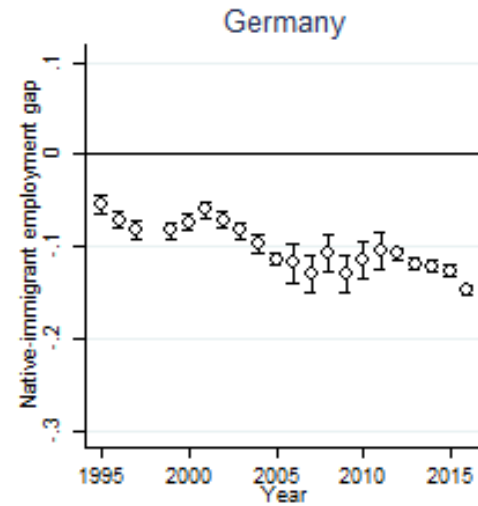
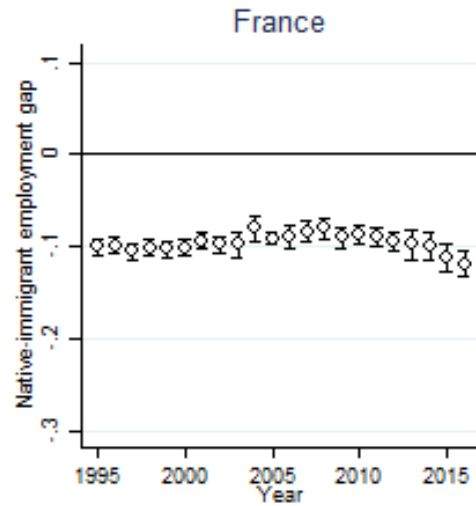


Source: Our elaboration on EU LFS 2017

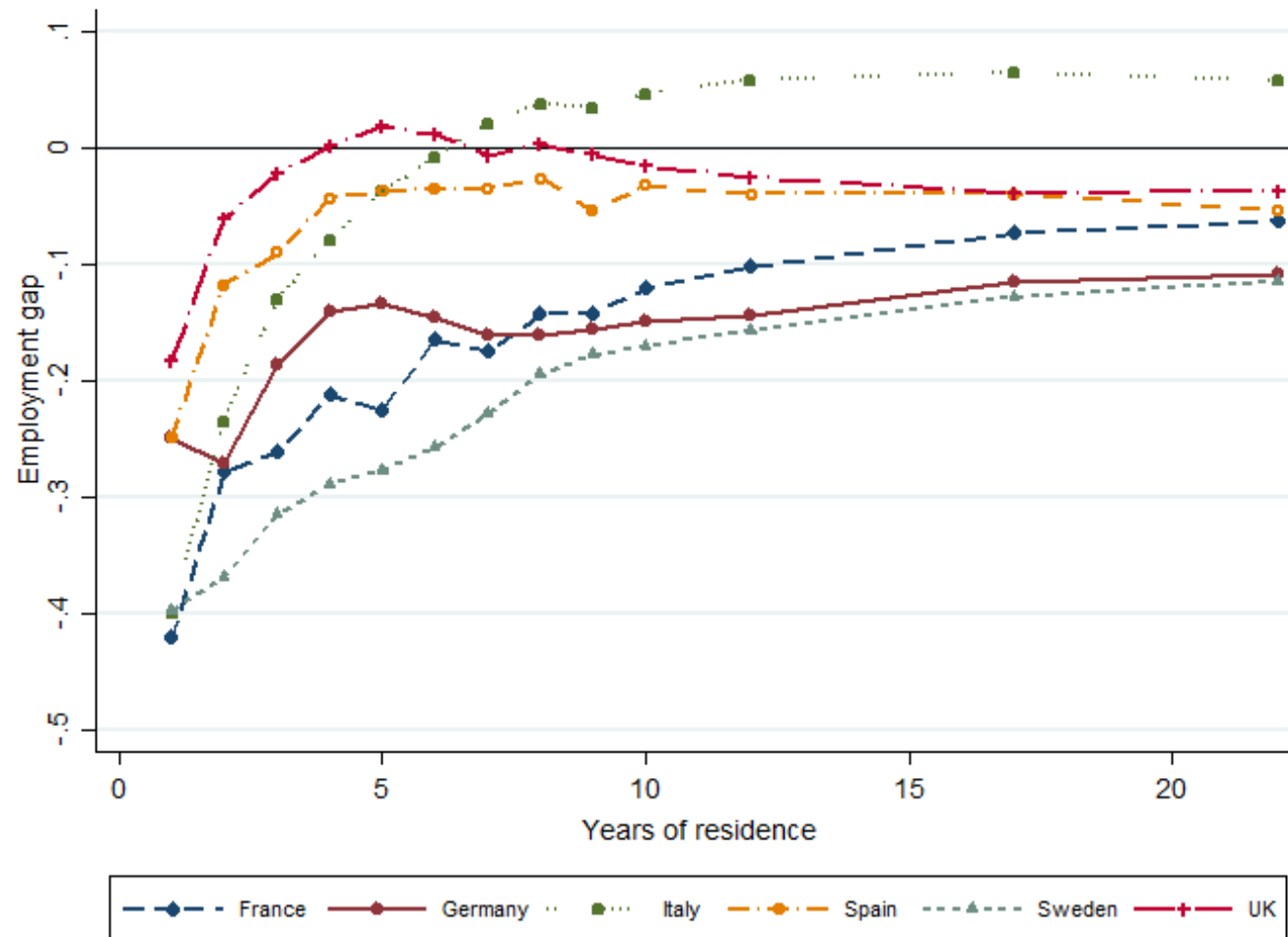
Different trends across countries



Gaps are not driven by differences in characteristics

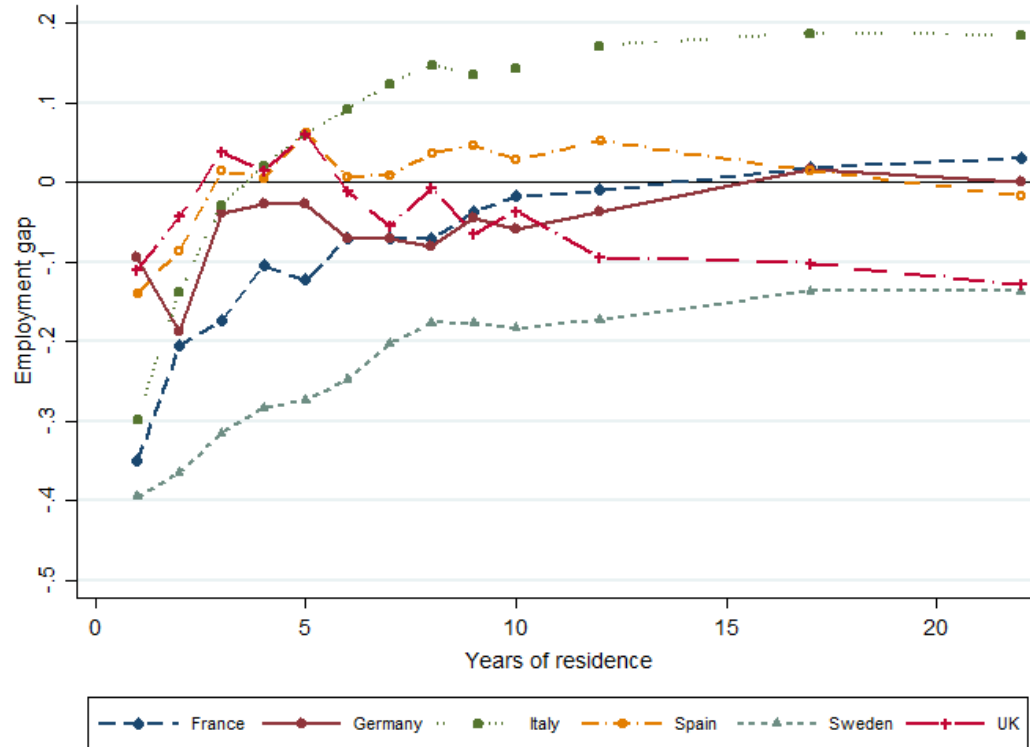


No convergence of employment probability over time, except for Italy

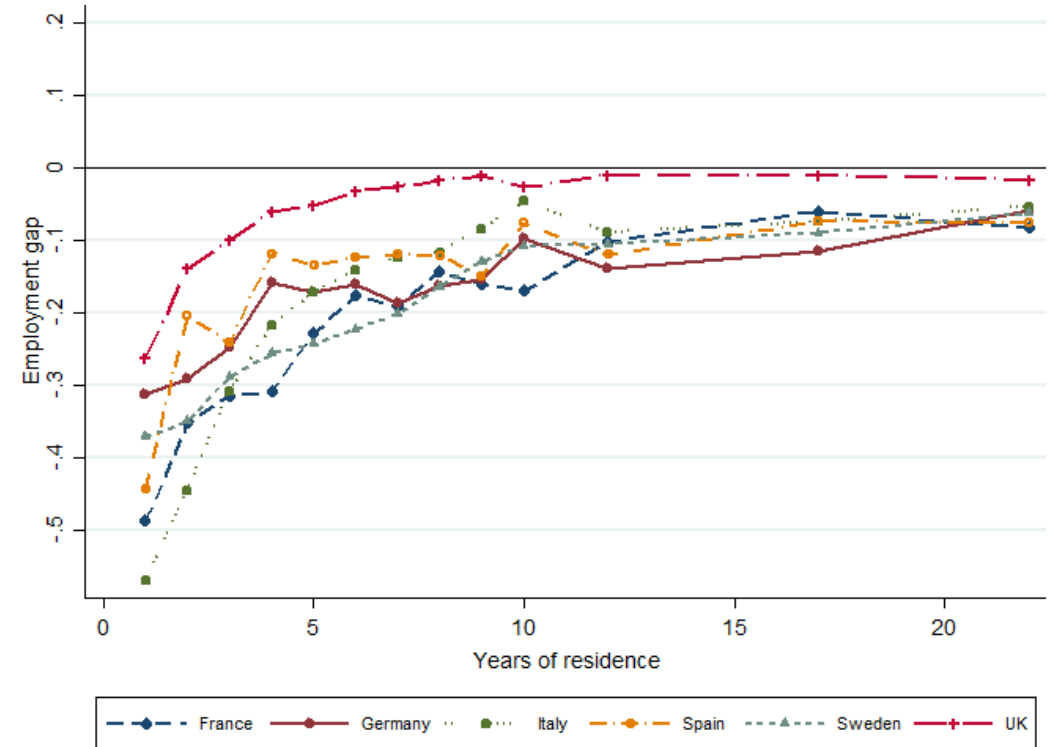


Employment assimilation is different for low and highly educated immigrants

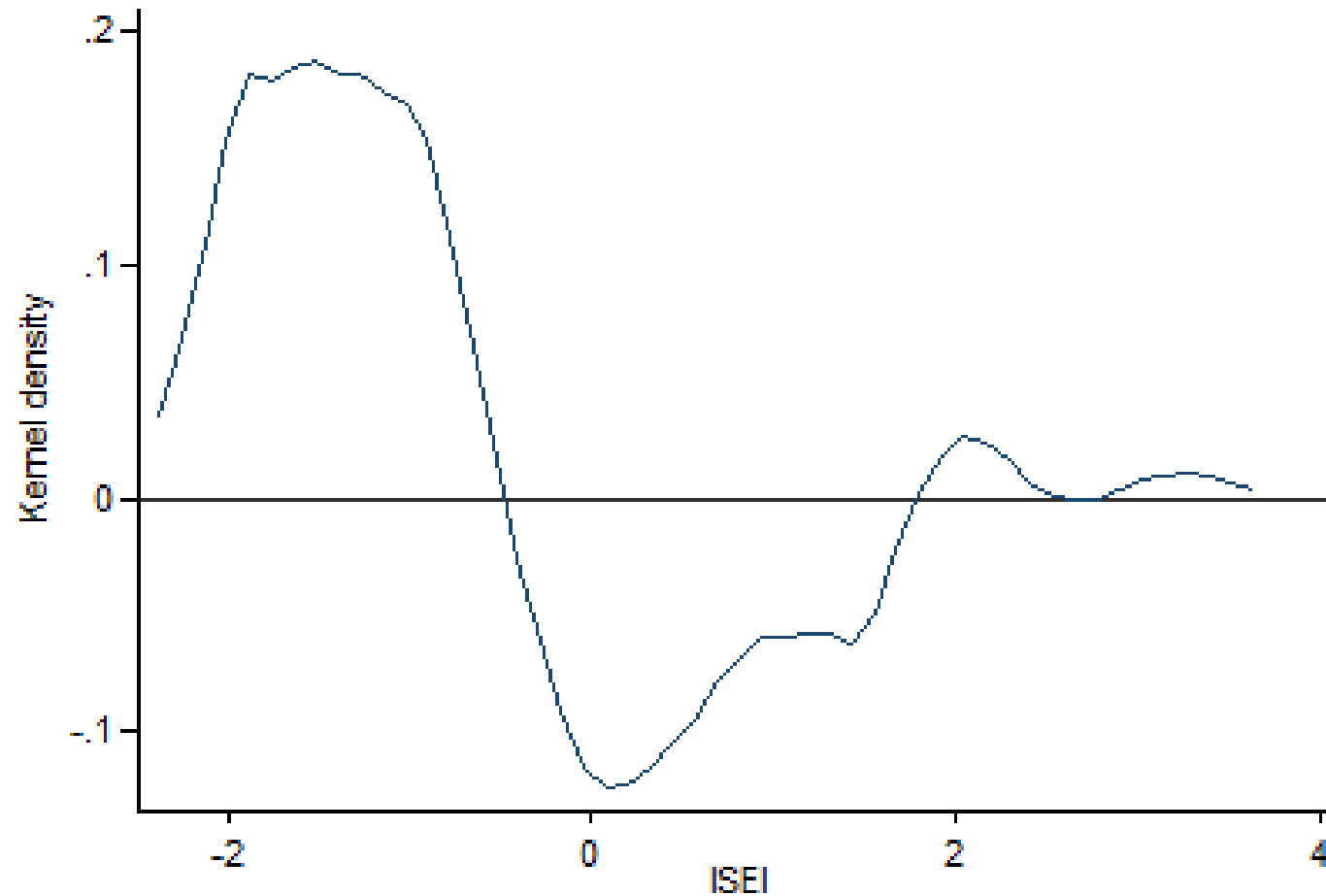
Low education



High education

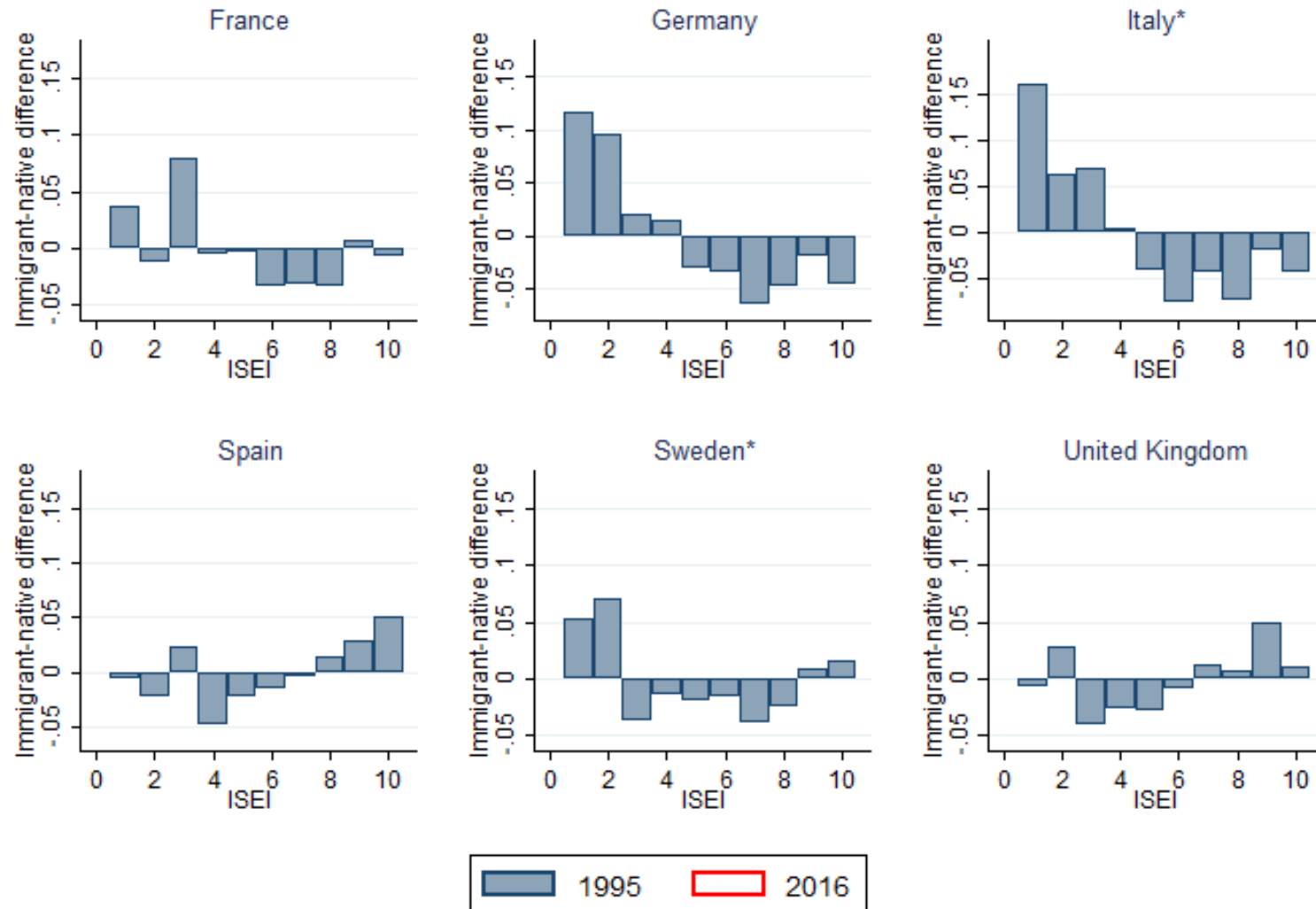


Immigrants' occupational distribution is more polarised than natives'



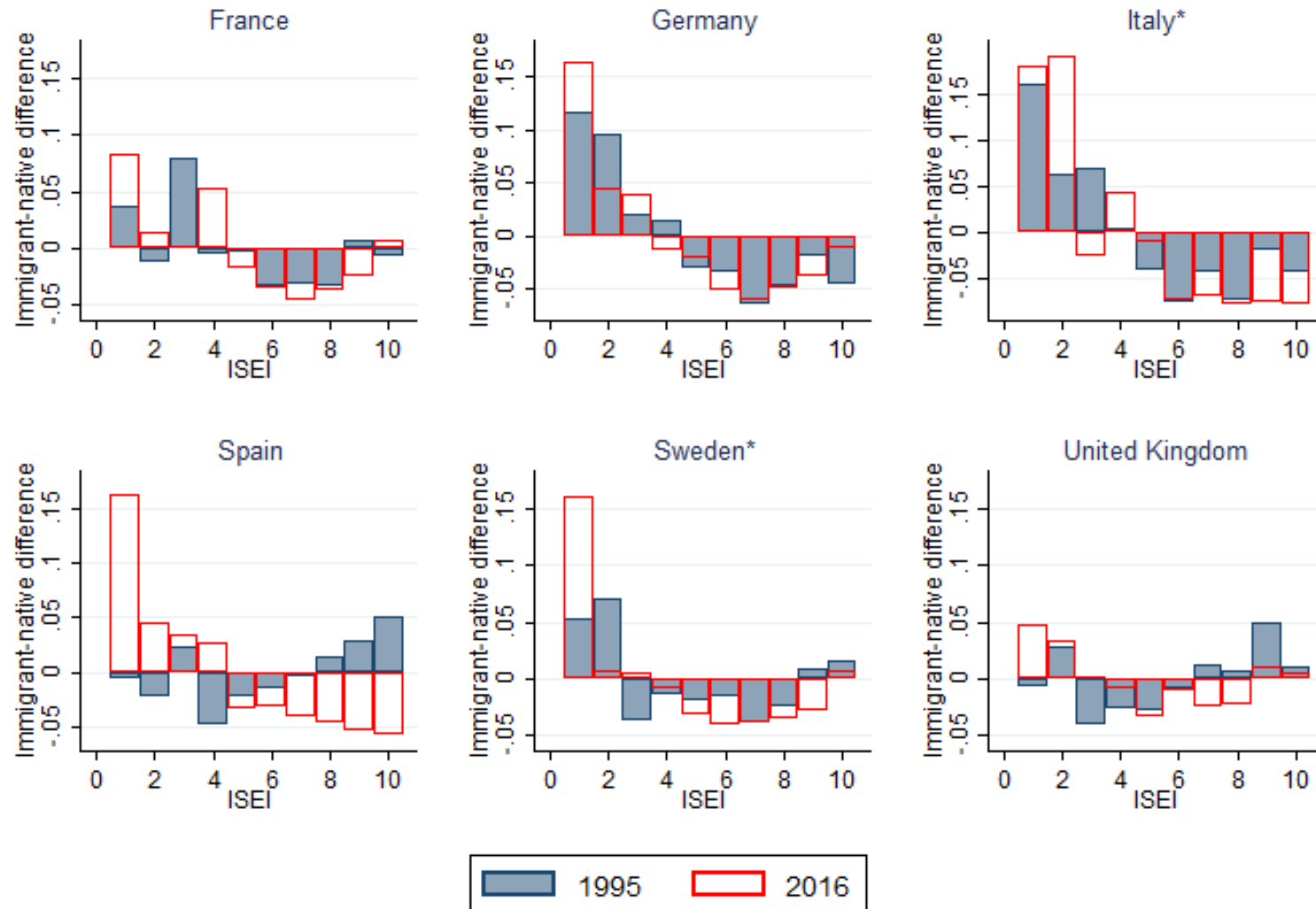
Source: Our elaboration on EU LFS 2017

Increasing concentration in low ranked occupations



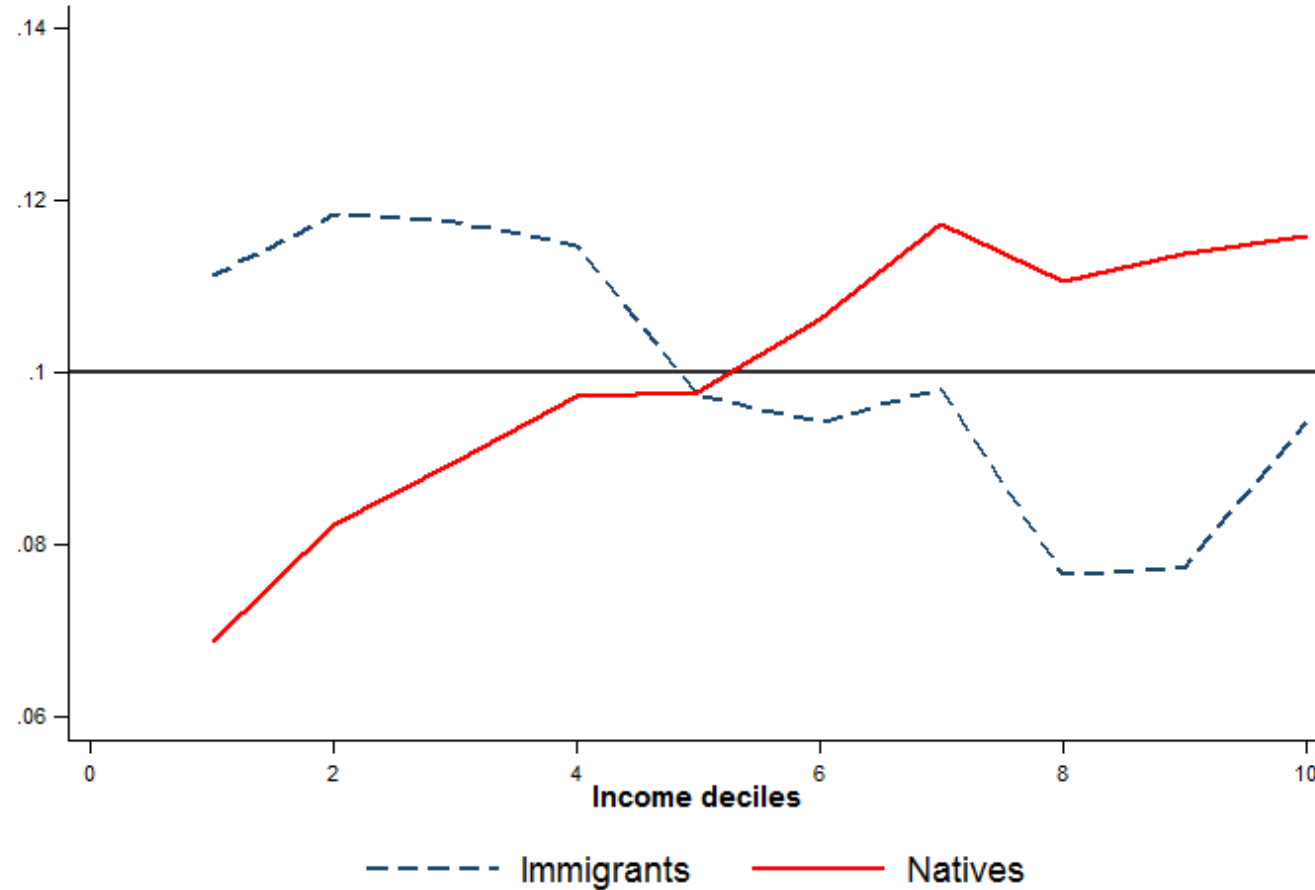
Source: Our elaboration on EU LFS

Increasing concentration in low ranked occupations



Source: Our elaboration on EU LFS

Higher concentration of immigrants at the bottom of the income distribution



Source: Our elaboration on EU LFS 2017

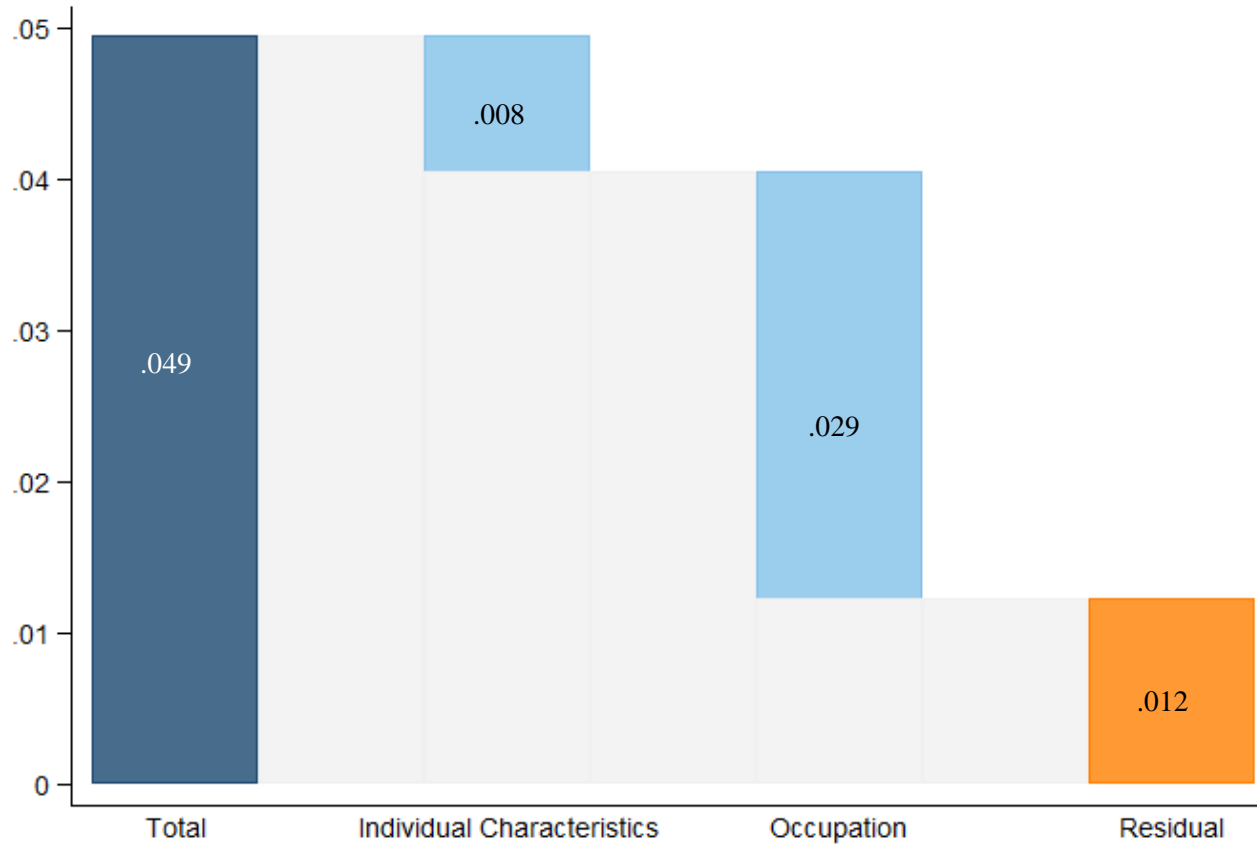


CENTRO STUDI LUCA D'AGLIANO

UNIVERSITÀ DEGLI STUDI
DI MILANO

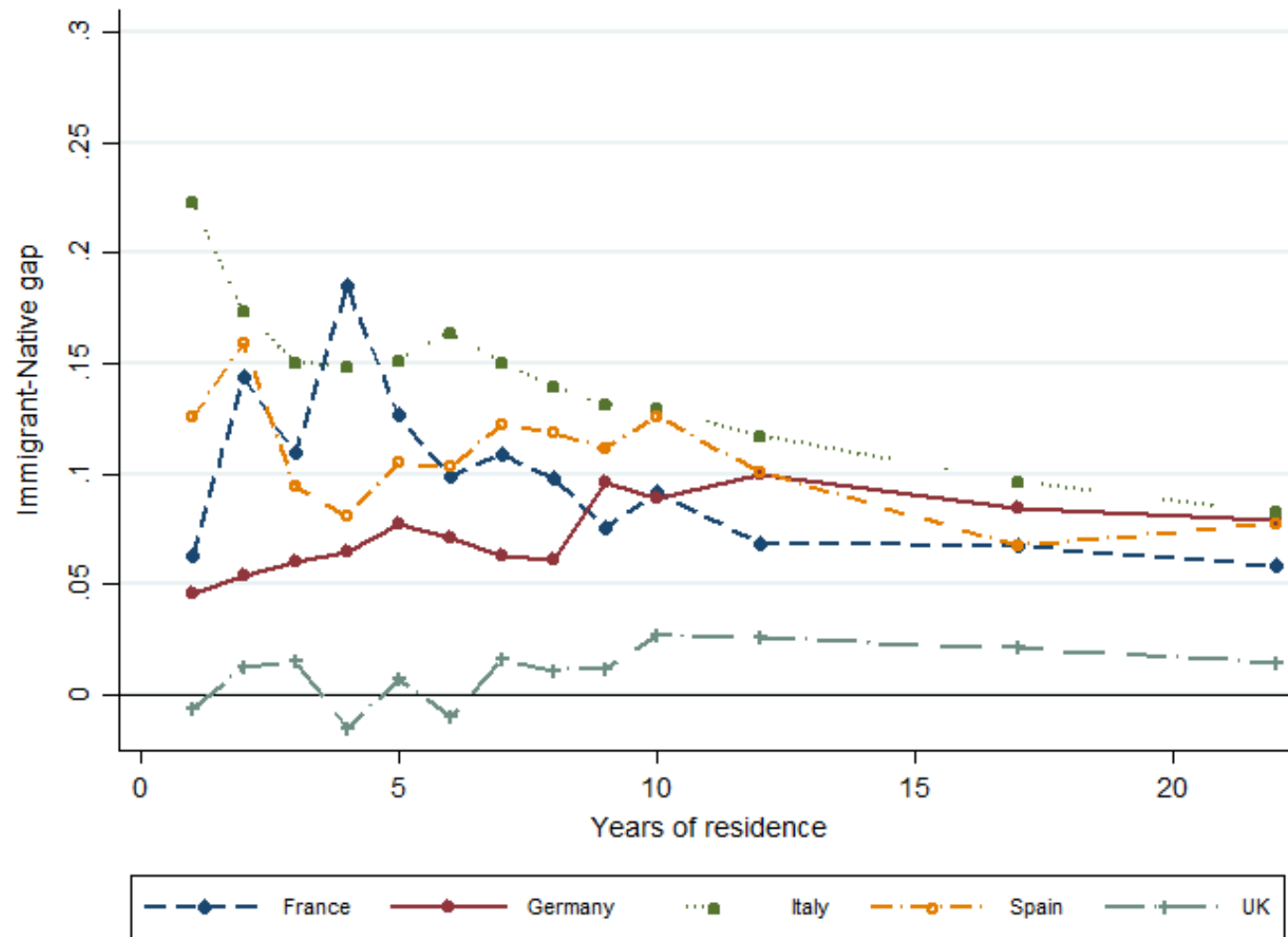


Occupational distribution explains more than half of immigrant income disadvantage

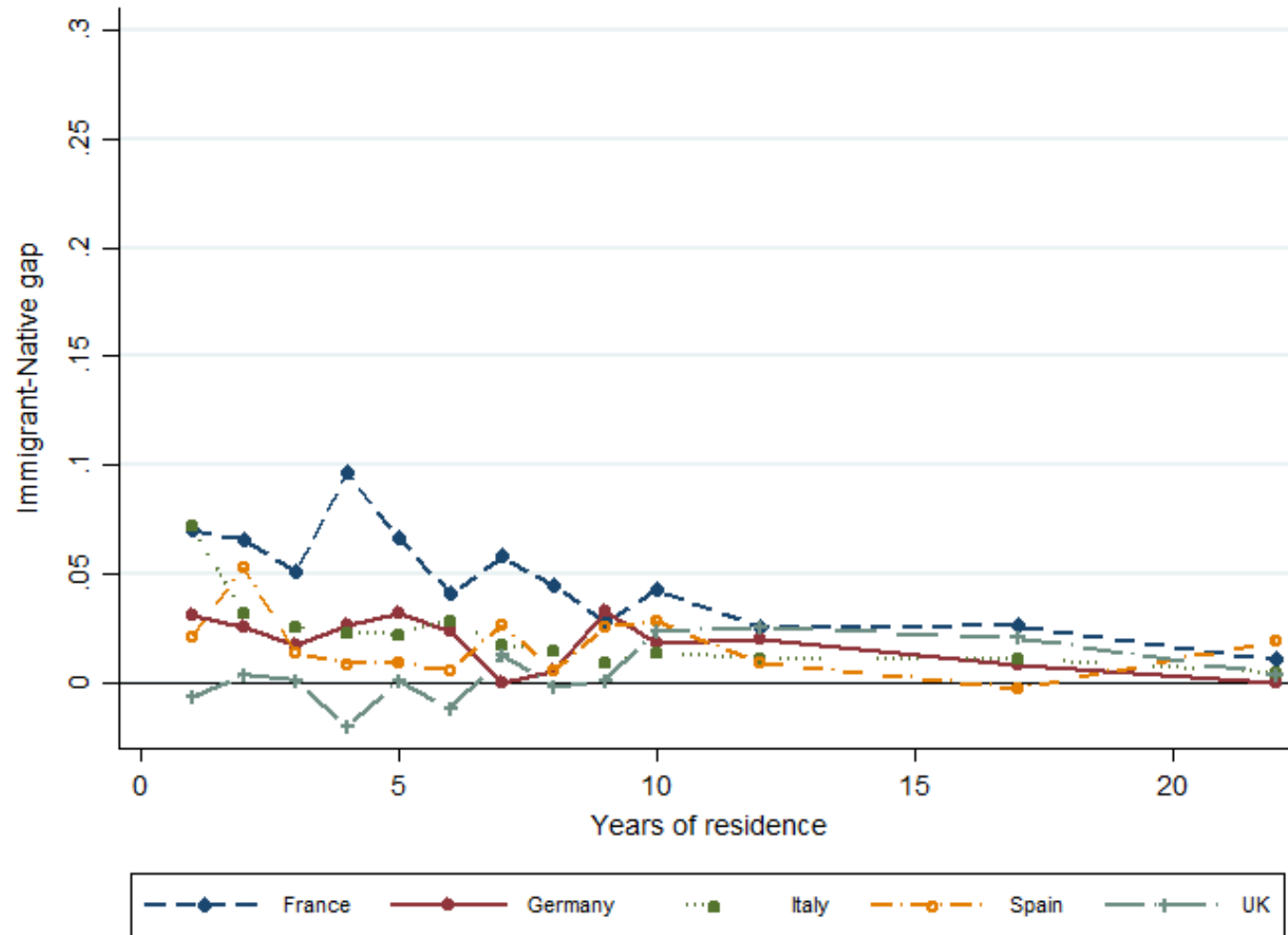


Source: Our elaboration on EU LFS 2017

Differences in probability of being in bottom decile decrease over time...



... no full convergence, even within occupation



Conclusions

- Immigrant economic conditions do improve over time, however they never fully converge to those of natives
- Overall worsening of immigrant economic outcomes over the last two decades
- Substantial increase in immigrants' concentration in lowest ranked occupation
- This trend could be explained by the progressive restrictions of legal entry channels for work reasons
- Public perception can sometimes be disconnected from reality
- For example, the UK is the country with the most educated immigrants and where immigrants perform better in the labour market. However, immigration has been among the main drivers of Brexit

